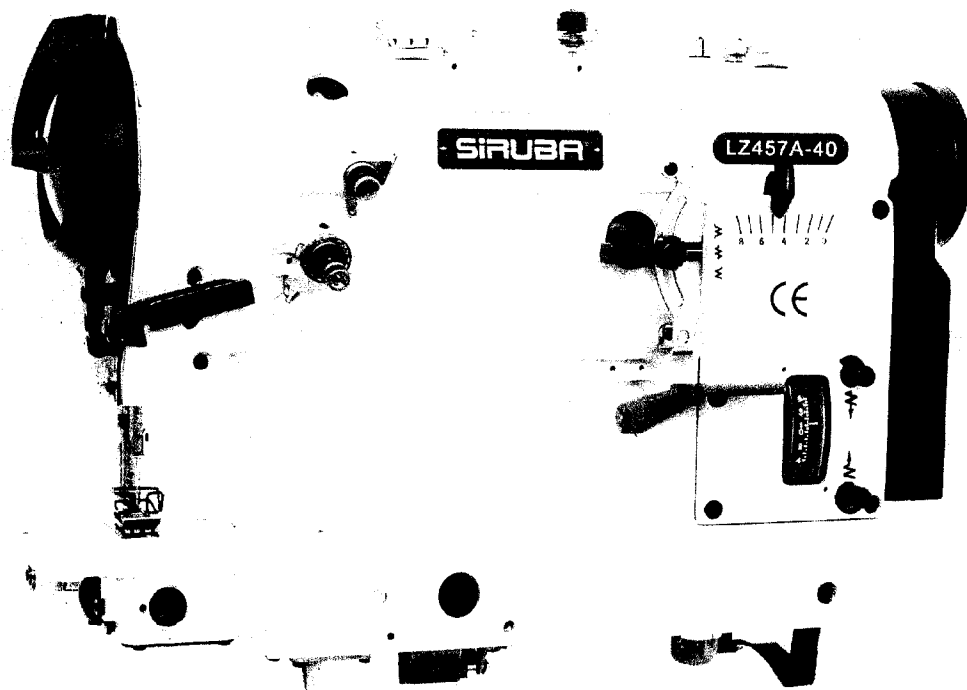


SIRUBA®

銀箭牌工業用縫紉機
INDUSTRIAL SEWING MACHINE

LZ457A

使用說明與零件圖
INSTRUCTION AND PARTS LIST



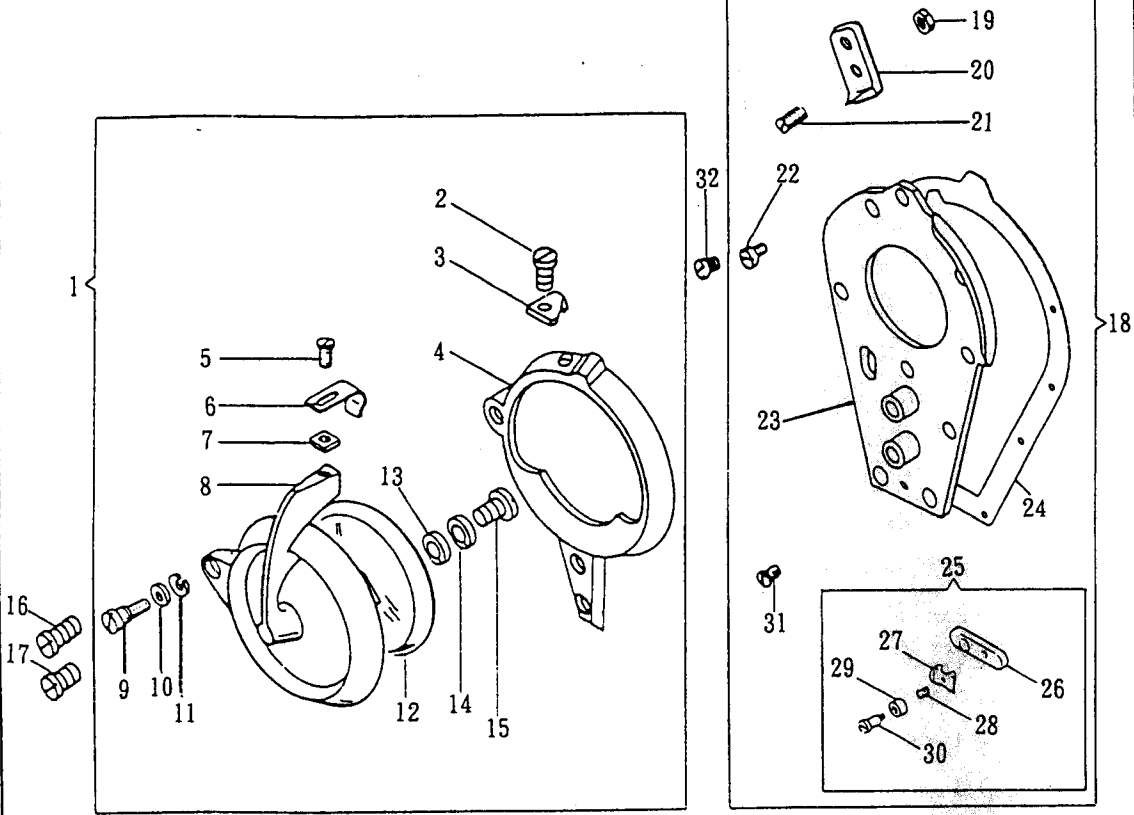
CE

 高林股份有限公司
KAULIN MFG. CO., LTD.

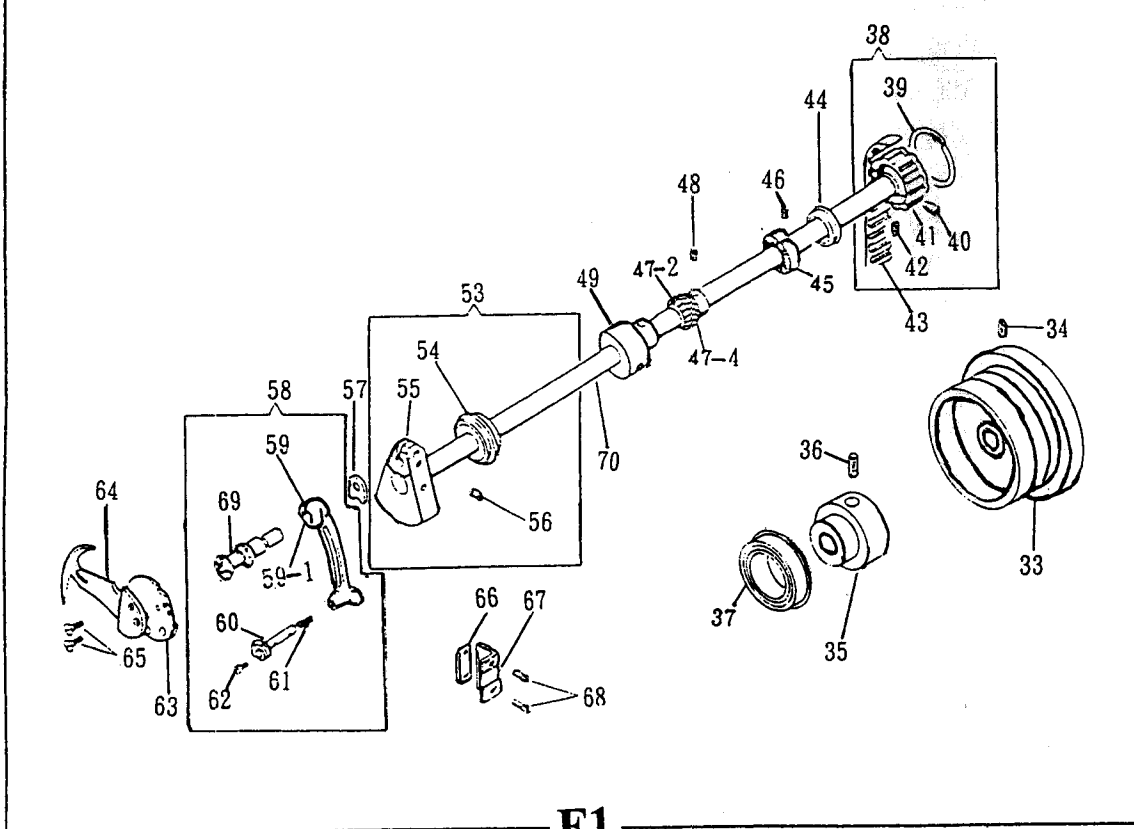
CONTENTS

	F1. ROTARY TAKE-UP GUARD, FACE PLATE	1
	F1. ARM SHAFT ,ROTARY TAKE-UP	1
	F2. TENSION RELEASER ,KNEE LIFTER ROCK FRAME	2
	F2. PRESSER BAR ,THROAT PLATE ,FEED DOG	2
	F3. NEEDLE BAR YOKE ,NEEDLE	3
	F3. NEEDLE BAR CONNECTING LINK (FOR 20 / 21)	3
	F4. NEEDLE BAR CONNECTING LINK (FOR 40 /140)	4
	F4. NEEDLE BAR CONNECTING LINK (FOR 143)	4
	F5. NEEDLE VIBRATING YOKECONNECTING LINK CARRIER FRAME (FOR 20 / 21 / 40 /140)	5
	F5. NEEDLE VIBRATING YOKECONNECTING LINK CARRIER FRAME (FOR 143)	5
	F6. FEED REGURATING INDICATOR ,LINK	6
	F6. NEEDLE VIBRATING ADJUSTING BRACKET	6
	F7. ARM COVER (TOP) (ASSEMBLY)	7
	F7. PRETENSION ,TENSION	7
	F8. HOOK ,BOBBIN CASE	8
	F8. HOOK SHAFT ,BEVEL GEAR	8
	F9. FEED DRIVING CONNECTION ,CARRIER FRAME	9
	F9. FEED CONTROL CAM	9
	F10. FEED DRIVING ROCK SHAFT CRANK	10
	F10. BED SHAFT	10
	F11. ARM COVER (BACK)	11
	F11. OIL PUMP BODY	11
	F12. OIL RESERVOIR AND KNEE LIFTER	12
	F12. ACCESSORIES	12
	F13. BELT GUARD ,THREAD UNWINDER (2-SPOOL)	13

ROTARY TAKE-UP GUARD, FACE PLATE



ARM SHAFT, ROTARY TAKE-UP

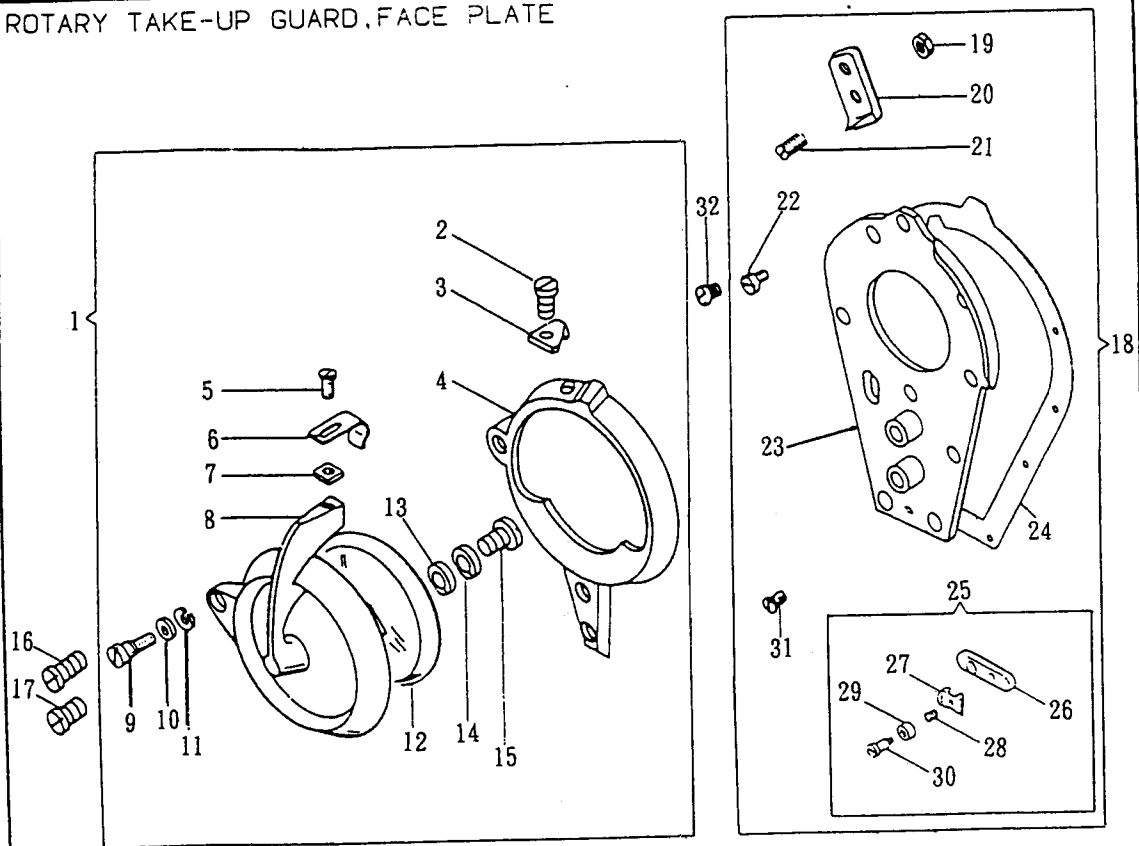


F1

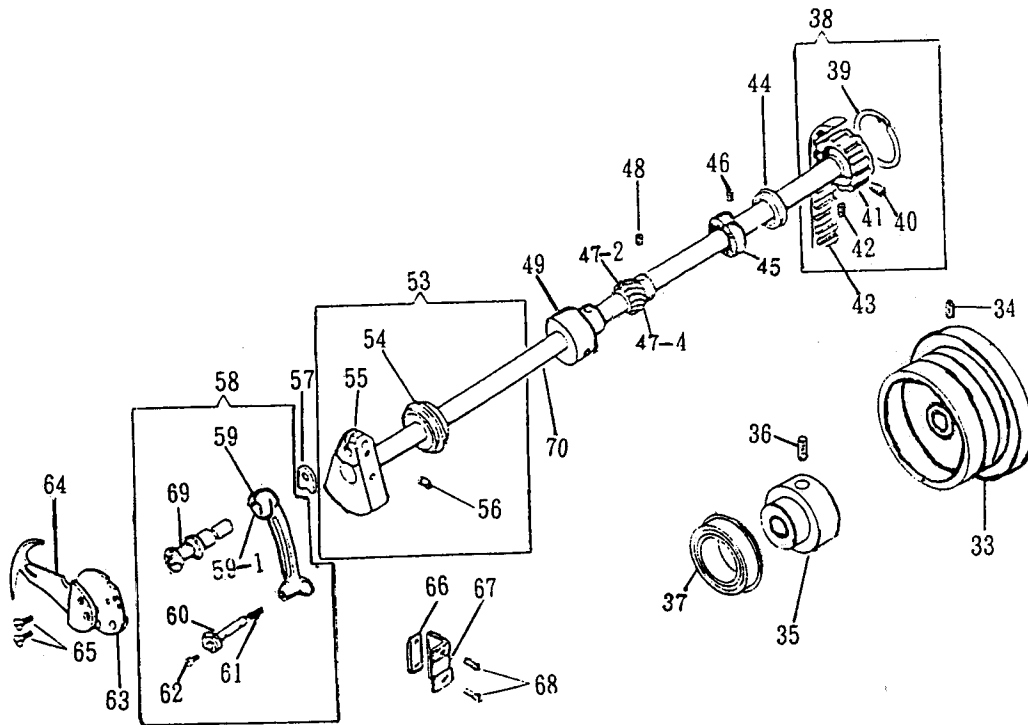
REF. NO	DESCRIPTION	QTY.
F 1 - 01	ROTARY TAKE-UP GUARD (CPL.)	
F 1 - 02 P	THREAD CUTTER SCREW	
F 1 - 03	THREAD CUTTER	
F 1 - 04	ROTARY TAKE-UP GUARD	
F 1 - 05 P	ROTARY TAKE-UP SCREW	
F 1 - 06	ROTARY TAKE-UP GUARD SPRING CATCH	
F 1 - 07 W	ROTARY TAKE-UP NUT	
F 1 - 08	ROTARY TAKE-UP GUARD COVER	
F 1 - 09 P	ROTARY TAKE-UP SCREW	
F 1 - 10	ROTARY TAKE-UP GUARD HINGE WASHER	
F 1 - 11	ROTARY TAKE-UP GUARD HINGE SPRING WASHER	
F 1 - 12	ROTARY TAKE-UP GUARD COVER WINDOW	
F 1 - 13	ROTARY TAKE-UP WASHER	
F 1 - 14	ROTARY TAKE-UP WASHER	
F 1 - 15 P	ROTARY TAKE-UP SCREW	
F 1 - 16 P	ROTARY TAKE-UP GUARD SCREW (LONG)	
F 1 - 17 P	ROTARY TAKE-UP GUARD SCREW (SHORT)	
F 1 - 18	FACE PLATE (CPL.)	
F 1 - 19 W	THREAD CUTTER SCREW NUT	
F 1 - 20	THREAD CUTTER (ON FACE PLATE)	
F 1 - 21 P	THREAD CUTTER SCREW	
F 1 - 22 P	THREAD CUTTER SCREW	
F 1 - 23	FACE PLATE. GASKET	
F 1 - 24	FACE PLATE GASKET	
F 1 - 25	NEEDLE THREAD NIPPER (CPL)	
F 1 - 26	NEEDLE THREAD NIPPER PLATE	
F 1 - 27	NEEDLE THREAD NIPPER THREAD GUIDE	
F 1 - 28	NEEDLE THREAD NIPPER SPRING	
F 1 - 29	NEEDLE THREAD NIPPER SPRING CAP	
F 1 - 30 P	NEEDLE THREAD NIPPER HINGE SCREW	
F 1 - 31 P	THREAD GUIDE SCREW	
F 1 - 32 P	FACE PLATE SCREW	8
F 1 - 33	MACHINE PULLEY	
F 1 - 34 P	MACHINE PULLEY SCREW	2

18

ROTARY TAKE-UP GUARD, FACE PLATE



ARM SHAFT, ROTARY TAKE-UP



F1

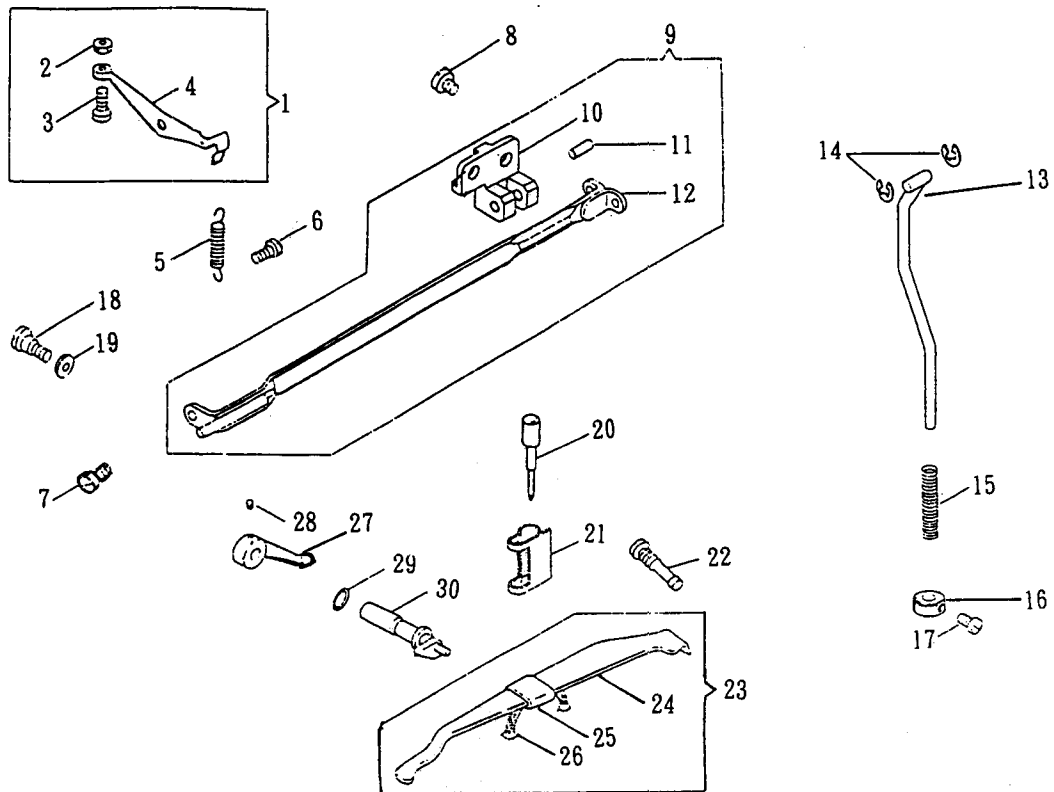
REF. NO	DESCRIPTION	QTY.
F 1 - 36 P	ARM SHAFT THRUST CALLAR SET SCREW	2
F 1 - 37	ARM SHAFT BEARING	
F 1 - 38	ARM SHAFT CONNECTION BELT PULLEY (CPL.)	
F 1 - 39	ARM SHAFT CONNECTION BELT PULLEY RING	
F 1 - 40 P	ARM SHAFT CONNECTION BELT PULLEY SET SCREW	
F 1 - 41	ARM SHAFT CONNECTION BELT PULLEY	
F 1 - 42 P	ARM SHAFT CONNECTION BELT PULLEY SCREW	
F 1 - 43	ARM SHAFT CONNECTION BELT	
F 1 - 44	ARM SHAFT OIL SHIELD	
F 1 - 45	BOBBIN WINDER DRIVING WHEEL	
F 1 - 46 P	BOBBIN WINDER DRIVING WHEEL SET SCREW	2
F 1 - 47-2	NEEDLE VIBRATING PINION (2)	
F 1 - 47-4	NEEDLE VIBRATING PINION (4)	
F 1 - 48 P	NEEDLE VIBRATING PINION SET SCREW	2
F 1 - 49	ARM SHAFT BUSHING (CENTER)	
F 1 - 53	ARM SHAFT (ASS'Y)	
F 1 - 54	ARM SHAFT BALL BEARING	
F 1 - 55	ARM SHAFT NEEDLE BAR CRANK	
F 1 - 56 P	NEEDLE BAR CRANK STUD POSITION SCREW	4
F 1 - 57	NEEDLE BAR CRANK THRUST WASHER	
F 1 - 58	NEEDLE BAR CONNECTING CONNECTING LINK (CPL.)	
F 1 - 59	NEEDLE BAR CONNECTING LINK	
F 1 - 59-1	NEEDLE BAR CONNECTING LINK BEARING	
F 1 - 60	NEEDLE BAR CONNECTING STUD	
F 1 - 61	NEEDLE BAR OIL FELT CORD	
F 1 - 62 P	NEEDLE BAR CONNECTING STUD SCREW	
F 1 - 63	ROTARY TAKE-UP MOUNTING DISK	
F 1 - 64	ROTARY TAKE-UP	
F 1 - 65 P	ROTARY TAKE-UP SCREW	2
F 1 - 66	NEEDLE BAR CONNECTING LINK CLAMPING PLATE	
F 1 - 67	NEEDLE BAR CONNECTING LINK GUID BLOCK	
F 1 - 68 P	NEEDLE BAR CONNECTING LINK GUID BLOCK SCREW	2
F 1 - 69	NEEDLE BAR CONNECTING CRANK STUD	
F 1 - 70	ARM SHAFT, ROTARY TAKE-UP	

18

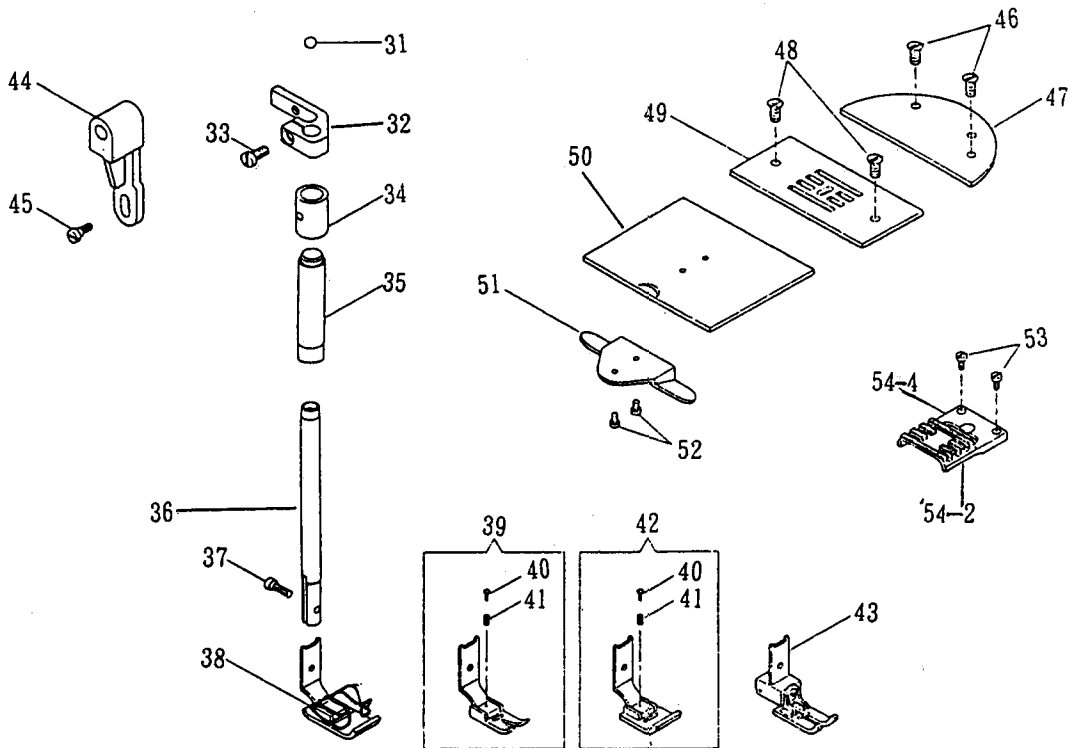
3

4

TENSION RELEASER, KNEE LIFTER ROCK FRAME



PRESSER BAR, THROAT PLATE, FEED DOG



REF. NO	DESCRIPTION	QTY.
F 2 - 01	TENSION RELEASER (CPL.)	
F 2 - 02 W	TENSION RELEASER ADJUSTING SCREW NUT	
F 2 - 03 P	TENSION RELEASER ADJUSTING SCREW	
F 2 - 04	TENSION RELEASER	
F 2 - 05	TENSION RELEASER SPRING	
F 2 - 06 P	TENSION RELEASER SCREW	
F 2 - 07 P	KNEE LIFTER ROCK FRAME HINGE SCREW	
F 2 - 08 P	KNEE LIFTER ROCK FRAME HINGE LOCK SCREW	
F 2 - 09	KNEE LIFTER ROCK FRAME (CPL.)	
F 2 - 10	KNEE LIFTER ROCK FRAME HINGE	
F 2 - 11	KNEE LIFTER ROCK FRAME HINGE STUD PIN	
F 2 - 12	KNEE LIFTER ROCK FRAME	
F 2 - 13	KNEE LIFTER LIFTING ROD (ASS'Y)	
F 2 - 14	KNEE LIFTER LIFTING ROD RING	2
F 2 - 15	KNEE LIFTER LIFTING ROD SPRING	
F 2 - 16	KNEE LIFTER LIFTING ROD SPRING COLLAR	
F 2 - 17 P	KNEE LIFTER LIFTING ROD SPRING SCREW	
F 2 - 18 P	LIGHT STUD HOLE PLUG SCREW	
F 2 - 19	LIGHT STUD HOLE PLUG SCREW WASHER	
F 2 - 20	PRESSER BAR SPRING ADJUSTING SCREW	
F 2 - 21	PRESSER BAR SPRING ADJUSTING SCREW FRICTION	
F 2 - 22 P	PRESSER BAR SPRING SCREW	
F 2 - 23	PRESSER BAR SPRING (CPL.)	
F 2 - 24	PRESSER BAR SPRING	
F 2 - 25	PRESSER BAR SPRING TUBE	
F 2 - 26	PRESSER BAR SPRING WICK	
F 2 - 27	PRESSER BAR LIFTER (CPL.)	
F 2 - 28 P	PRESSER BAR LIFTER SET SCREW	
F 2 - 29	PRESSER BAR LIFTING CAM STUD O-RING	
F 2 - 30	PRESSER BAR LIFTING CAM STUD (CPL.)	
F 2 - 31	PRESSER BAR BALL	
F 2 - 32	PRESSER BAR POSITION GUIDE	
F 2 - 33 P	PRESSER BAR POSITION GUIDE SCREW	
F 2 - 34	PRESSER BAR BUSHING COVER	
F 2 - 35	PRESSER BAR BUSHING	

-13

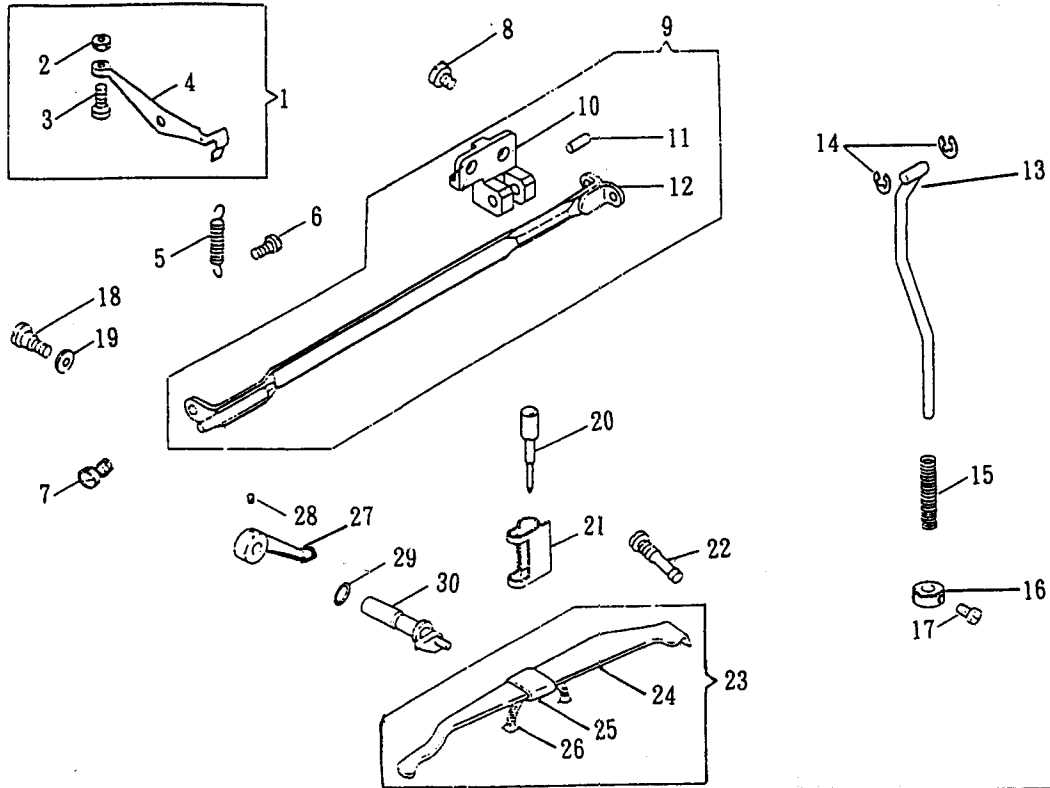
-16

6

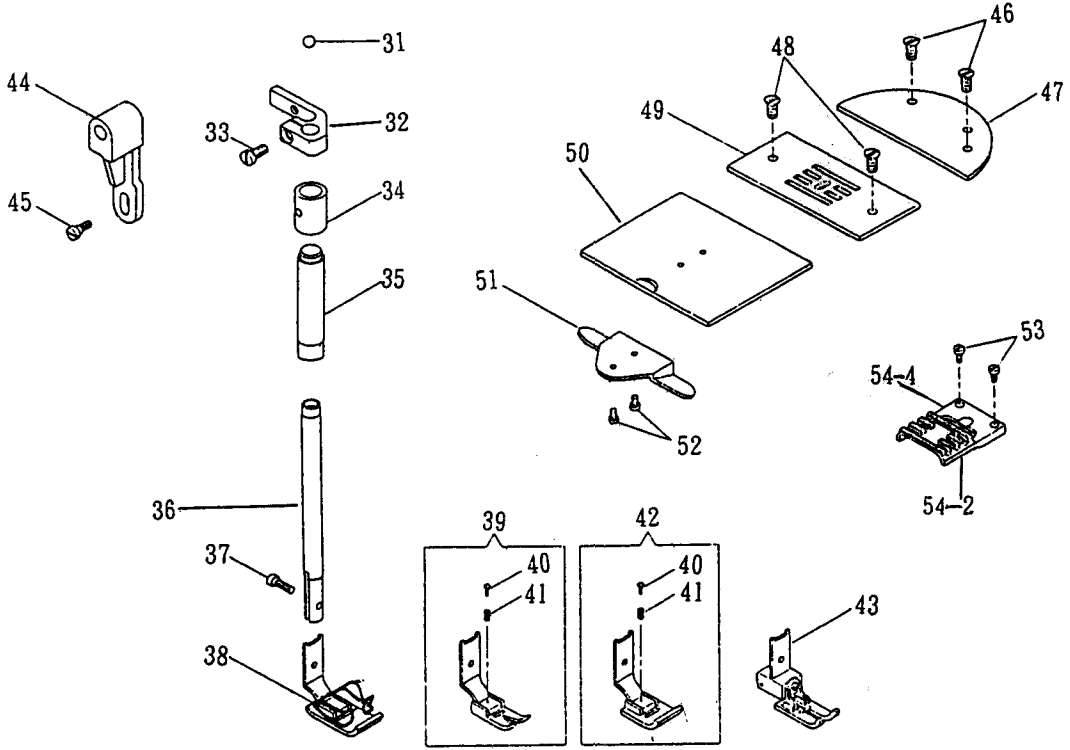
47

53

TENSION RELEASER, KNEE LIFTER ROCK FRAME



PRESSER BAR, THROAT PLATE, FEED DOG



REF. NO	DESCRIPTION	QTY.
F 2 - 36	PRESSER BAR	
F 2 - 37 P	PRESSER FOOT SCREW	
F 2 - 38	PRESSER FOOT (HINGED) (CPL.)	
F 2 - 39	PRESSER FOOT (HINGED) (CPL.)	
F 2 - 40 P	PRESSER FOOT SCREW	
F 2 - 41 P	PRESSER FOOT SCREW	
F 2 - 42	PRESSER FOOT (HINGED) (CPL.)	
F 2 - 43	PRESSER FOOT (HINGED) (COMPENSATING) (CPL.)	
F 2 - 44	PRESSER BAR LIFTING CAM CATCH	
F 2 - 45 P	PRESSER BAR LIFTING LINK SCREW	
F 2 - 46 P	BED PLATE SCREW	2
F 2 - 47	BED PLATE	
F 2 - 48 P	THROAT PLATE SCREW	2
F 2 - 49	THROAT PLATE	
F 2 - 50	BED SLIDE	
F 2 - 51	BED SLIDE SPRING	
F 2 - 52 P	BED SLIDE SPRING SCREW	2
F 2 - 53 P	FEED DOG SCREW	2
F 2 - 54-2	FEED DOG (2)	
F 2 - 54-4	FEED DOG (4)	

—13

5

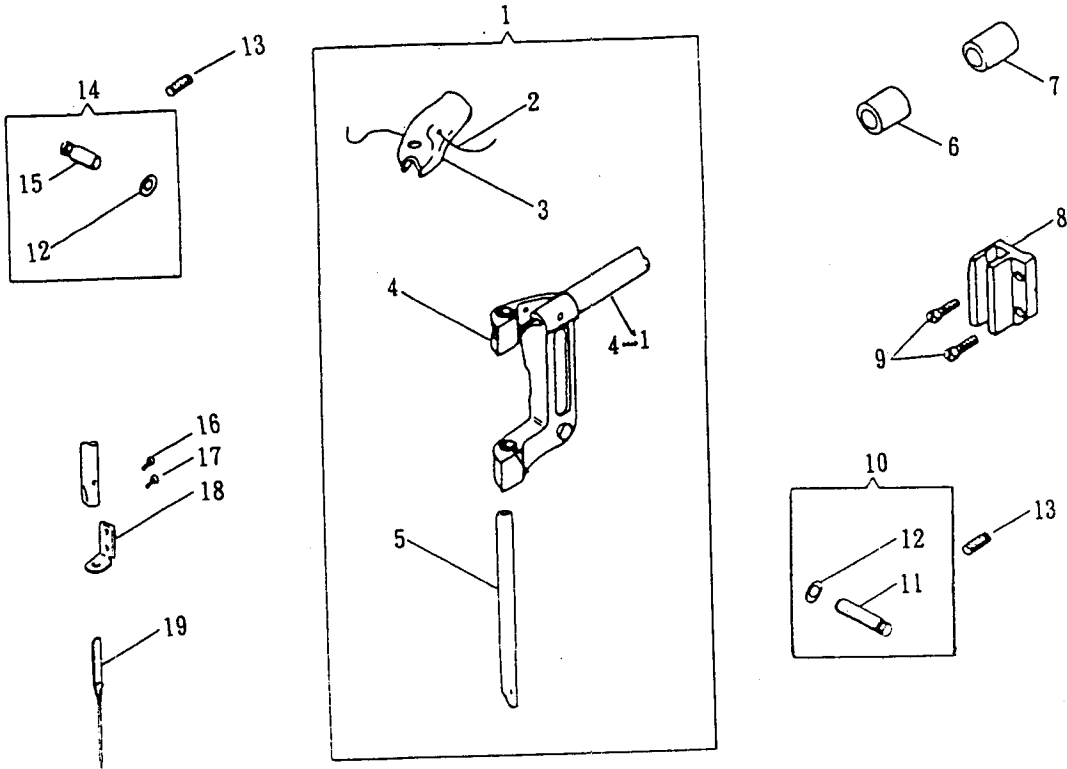
—16

,46

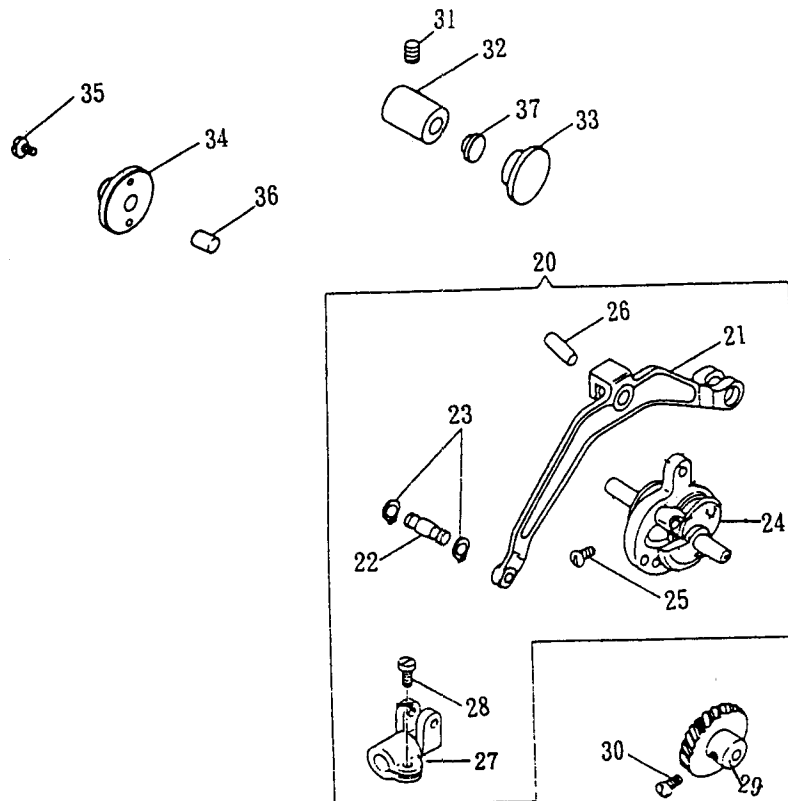
47

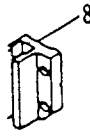
53

NEEDLE BAR YOKE, NEEDLE



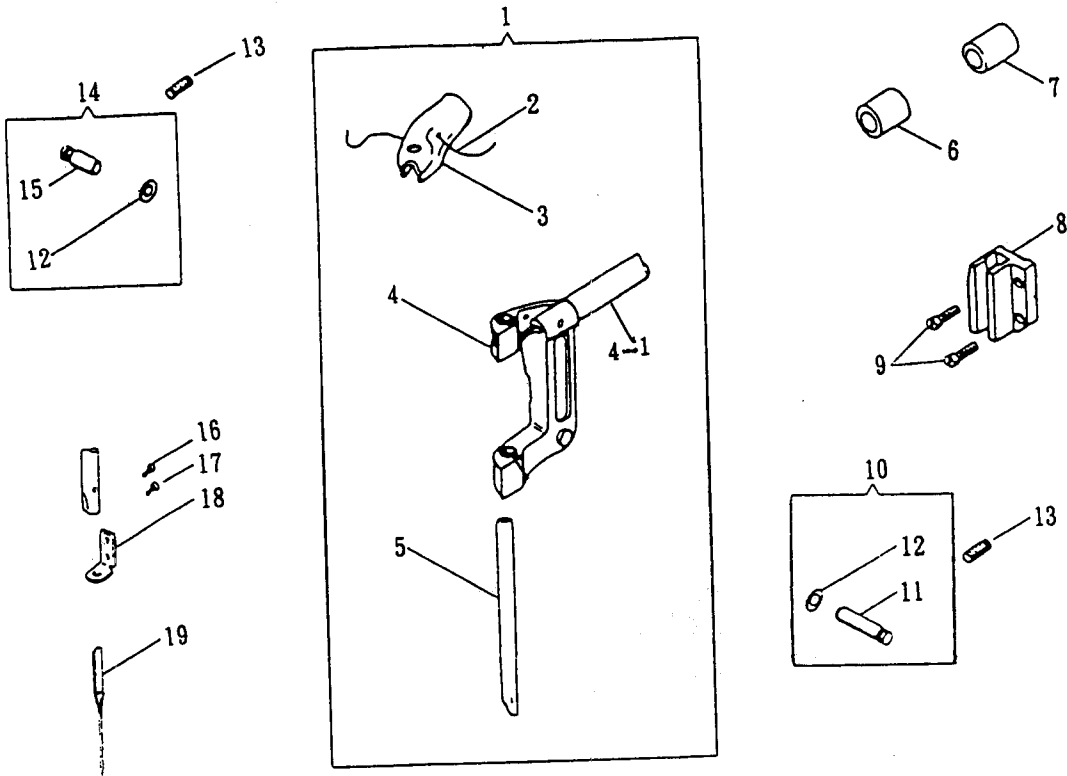
NEEDLE BAR CONNECTING LINK (FOR 20/21)





REF. NO	DESCRIPTION	QTY.
F 3 - 01	NEEDLE BAR YOKE (ASS'Y)	
F 3 - 02	NEEDLE BAR OIL FELT CORD	
F 3 - 03	NEEDLE BAR OIL FELT	
F 3 - 04	NEEDLE BAR YOKE	
F 3 - 04-1	NEEDLE BAR SHAFT BUSHING	
F 3 - 05	NEEDLE BAR	
F 3 - 06	NEEDLE BAR YOKE SHAFT BUSHING (FRONT)	
F 3 - 07	NEEDLE BAR YOKE SHAFT BUSHING (BACK)	
F 3 - 08	NEEDLE BAR CONNECTING STUD GUIDE BLOCK	
F 3 - 09 P	NEEDLE BAR CONNECTING STUD GUIDE BLOCK SCREW	2
F 3 - 10	NEEDLE BAR YOKE GUIDE (FRONT)(CPL.)	
F 3 - 11	NEEDLE BAR YOKE GUIDE (FRONT)	
F 3 - 12	NEEDLE BAR YOKE GUIDE SEAL	2
F 3 - 13 P	NEEDLE BAR YOKE GUIDE SET SCREW	2
F 3 - 14	NEEDLE BAR YOKE GUIDE (REAR)(CPL.)	
F 3 - 15	NEEDLE BAR YOKE GUIDE (REAR)	
F 3 - 16 P	NEEDLE BAR THREAD GUIDE SCREW	
F 3 - 17 P	NEEDLE SET SCREW	
F 3 - 18	NEEDLE BAR THREAD GUIDE	
F 3 - 19	NEEDLE	
F 3 - 20	NEEDLE BAR CONN. LINK (CPL.)	
F 3 - 21	NEEDLE BAR CONN. LINK	
F 3 - 22	NEEDLE BAR CONN. LINK HINGE STUD	
F 3 - 23	NEEDLE BAR CONN. LINK HINGE STUD SNAP RING	2
F 3 - 24	NEEDLE VIBRATING ECC. SHAFT	
F 3 - 25 P	NEEDLE BAR CONN. LINK STUD SCREW	
F 3 - 26	NEEDLE BAR CONN. LINK STUD	
F 3 - 27	NEEDLE BAR CONN. LINK HINGE BEARING	
F 3 - 28 P	NEEDLE BAR CONN. LINK HINGE BEARING SCREW	
F 3 - 29	NEEDLE VIBRATING ECC. SHAFT GEAR	
F 3 - 30 P	NEEDLE VIBRATING ECC. SHAFT GEAR SET SCREW	2

NEEDLE BAR YOKE, NEEDLE



NEEDLE BAR CONNECTING LINK (FOR 20/21)

